

## Antenna adjustment and installation procedure

Dec 27, 2024  
Circuit Design, Inc.  
Ver. 1.0

### Introduction

This application note applies to the Circuit Design antennas whose angle can be adjusted.

Installation of antenna

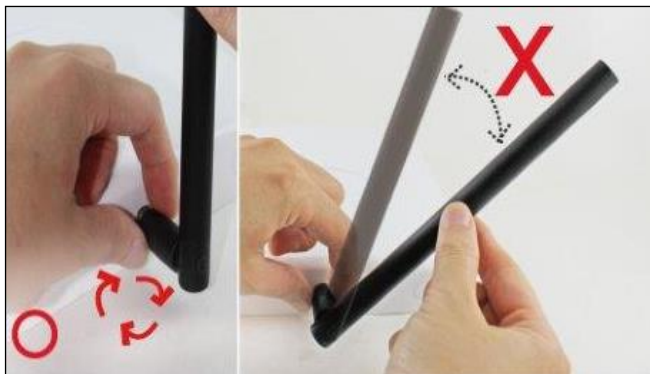
Figure 1



Regardless of whether the connector joint is locked in position or not, the antenna angle can be adjusted (0°, 45°, 90°) as shown in Figure 1.

To avoid undue stress on the connector, while adjusting the angle, it is recommended to firmly grip the connector before adjusting.

Figure 2



If you are tightening the connector joint refer to the left hand diagram in figure 2. While holding the main antenna element, turn the connector joint as shown. Do not use the antenna element to tighten. Doing so may cause damage to the antenna or the connected equipment. After securing the connector in place, avoid adjusting the angle of the antenna element shown in figure 2. Doing so may cause damage to the antenna or the connected equipment.

Adjusting the antenna

Figure 3



To adjust the angle after tightening the connector joint, first turn and loosen the connector as shown in figure 3. Or disconnect the antenna from the equipment then set the angle for installing like in figure 2. Then when installing, tighten the connector joint again.

Tighten the connector to prevent the antenna falling under its own weight.

Depending on the amount, sometimes the antenna angle is difficult to maintain.

Note: Do not overtighten by using tools etc. It is recommended to tighten by hand.

Issue	Date	Comment
1.0	2024/12/27	Start

---

© Copyright 2024 Circuit Design, Inc. all rights reserved.

No part of this document may be copied or distributed in part or in whole without the prior written consent of Circuit Design, Inc.

---